

## 35 SERIES SERVICE CASE DOUBLE DUTY - RED MEAT



MODEL NO.	DESCRIPTION	LENGTH	DEPTH	HEIGHT	VOLTAGE	AMPS	HP/BTUS	POWER CORD	EST. SHIP WEIGHT
SC-CMS35-4-LED	Self-contained	50"	37.5"	52"	115	12.0	1/4	5-15P	500
SC-CMS35-6-LED	Self-contained	71"	35.5"	52"	115	12.0	1/3	5-15P	645
SC-CMS35-8-LED	Self-contained	95"	35.5"	52"	115	16.0	1/2	5-15P	900
SC-CMS35-10-LED	Self-contained	119"	35.5"	52"	115	13.8	1/2	NO	1230
SC-CMS35-12-LED	Self-contained	143"	35.5"	52"	115	17.4	3/4	NO	1344
R-CMS35-4-LED	Remote	50"	37.5"	52"	115	0.8	1400	NO	460
R-CMS35-6-LED	Remote	71"	35.5"	52"	115	1.3	2100	NO	595
R-CMS35-8-LED	Remote	95"	35.5"	52"	115	1.6	2800	NO	845
R-CMS35-10-LED	Remote	119"	35.5"	52"	115	2.4	3500	NO	1175
R-CMS35-12-LED	Remote	143"	35.5"	52"	115	2.4	4200	NO	1295

MODEL NUMBER PREFIX - SC = Self Contained R = Remote

MODEL NUMBER SUFFIX - W = White B = Black S = Stainless Steel LED = LED lighting

- Cases are designed to operate at 75 degrees Fahrenheit and 55% relative humidity
- Cases are equipped with drains; check your local building codes for connection requirements.
- Specification subject to change without notice

IF COLORS ARE MIXED AN ADDITIONAL CHARGE WILL APPLY



Howard McCray • 831 East Cayuga St • Philadelphia, PA 19124 USA • (215) 464-6800  
1-800-344-8222 • Fax (215) 969-4890 • E-Mail: sales@howardmccray.com • www.howardmccray.com

## 35 SERIES SERVICE CASE DOUBLE DUTY - RED MEAT

### STANDARD SPECIFICATIONS AND OPTIONAL FEATURES

#### CONSTRUCTION

- UL - Classified to ANSI/NSF 7
- Foamed in place CFC free foam
- Thermal insulated front glass - 26" H
- Heavy gauge steel super structure
- Bottom storage
- Drain is included for cleaning

#### INTERIOR

- White, black or stainless steel ends
- White aluminum floor (bottom storage area)
- Air insulated baffle (prevents moisture from dripping into display area)

#### EXTERIOR

- Double pane rear removable doors
- Rear compression door jamb
- Removable front grille allows for cleaning
- Removable rear grille for easy servicing
- 1" Front Bumper

#### FINISHES

- White, black or stainless steel front and ends
- Stainless steel mirror trim
- Stainless steel heavy gauge top - 17.375" W
- Bottom rear is designer white, black or stainless steel aluminum

#### LIGHTING

- 2 rows of lighting at top of unit

#### ELECTRICAL REQUIREMENTS

- 115V 4', 6', & 8' with power cord
- Unit must be hard wired 10' & 12' only
- UL/CUL listed
- 115V-5AMP general purpose receptacle (wired separately) 10' & 12' only

#### REFRIGERATION

- Copevap system (eliminates need for condensate pan)
- Humidity coil located at inside top of unit
- Automatic defrost electronically controlled (Self-contained units only)
- Electronically control maintains constant temperatures
- Remotes available

#### OPTIONS

- Scale stand
- Paper cutter
- Stainless steel, laminate, or paint
- Mirrored doors
- Stainless steel mezzanine shelf
- Drop work shelf
- 1" Special color front bumper
- Door locks
- Digital thermometer
- Meat platters
- Red meat bulbs

#### IMPORTANT NOTE:

**ALL REFRIGERATED CASES ARE DESIGNED TO OPERATE IN AN ENVIRONMENT OF 75 DEGREES AND 55% RELATIVE HUMIDITY.**

**PRODUCT MUST BE COOLED BEFORE BEING DISPLAYED WITHIN THE CASE.**

**DRAIN IS REQUIRED**

## 35 SERIES SERVICE CASE DOUBLE DUTY - RED MEAT

### TECHNICAL DATA

Model No.	SC R	SC-CMS35-4-LED R-CMS35-4-LED	SC-CMS35-6-LED R-CMS35-6-LED	SC-CMS35-8-LED R-CMS35-8-LED	SC-CMS35-10-LED R-CMS35-10-LED	SC-CMS35-12-LED R-CMS35-12-LED
Length		50"	71"	95"	119"	143"
Height		52"	52"	52"	52"	52"
Depth		35.5"	35.5"	35.5"	35.5"	35.5"
Depth with bottom door		37.5"				
(Dimensions are +/- 1/4")						
Operating temperature		34°F to 36°F	34°F to 36°F	34°F to 36°F	34°F to 36°F	34°F to 36°F
Compressor size HP	SC	1/4	1/3	1/2	1/2	3/4
Defrost per day (24 hours)	Air Defrost	1 per day	1 per day	1 per day	1 per day	1 per day
BTU's at +20°F Evap. Temp.	R	1400	2100	2800	3500	4200
Voltage	SC	115	115	115	115	115
Amperage	SC	12.0	12.0	16.0	13.8	17.4
Remote Voltage	R	115	115	115	115	115
Amperage, lights only	R	0.8	1.3	1.6	2.4	2.4
Cord and plug	SC	5-15P	5-15P	5-15P	NO	NO
	R	NO	NO	NO	NO	NO
Exterior color		W, B, S	W, B, S	W, B, S	W, B, S	W, B, S
Interior color		W, B, S	W, B, S	W, B, S	W, B, S	W, B, S
Inside end panels		W, B, S	W, B, S	W, B, S	W, B, S	W, B, S
Floors		W, B, S	W, B, S	W, B, S	W, B, S	W, B, S
# of top doors		2	2	4	4	4
Door size		19.19" x 19.25"	29.625" x 19.25"	19.19" x 19.25"	23.5" x 19.25"	29.625" x 19.25"
# of bottom doors	SC	1 external	2	2	2	4
	R	2	2	2	4	4
# of coils		3	3	3	3	3
Bottom storage		Yes	Yes	Yes	Yes	Yes
Front glass		26" x 45"	26" x 66"	26" x 90"	26" x 114"	26" x 138"
# of main deck shelves		2	3	4	5	6
Main deck size		31.625" x 22.25"	31.625" x 22.25"	31.625" x 22.25"	31.625" x 22.25"	31.625" x 22.25"
Cubic capacity		30	45	60	75	90
Mezzanine shelf (Optional)		45.25" x 12.00"	66.50" x 12.00"	(2) 45.25" x 12.00"	(2) 57.25" x 12.00"	(2) 69.25" x 12.00"
Shipping Info						
Height		58"	58"	58"	58"	58"
Depth		44"	44"	44"	44"	44"
Length		61"	87"	109"	135"	157"
Gross weight SC/R		500/460	645/595	900/845	1230/1175	1344/1295
Cubic feet		90	128	160	200	231

#### Prefix

SC = Self Contained  
R = Remote

#### Suffix

B = Black  
W = White  
S = Stainless Steel  
LED = LED lighting

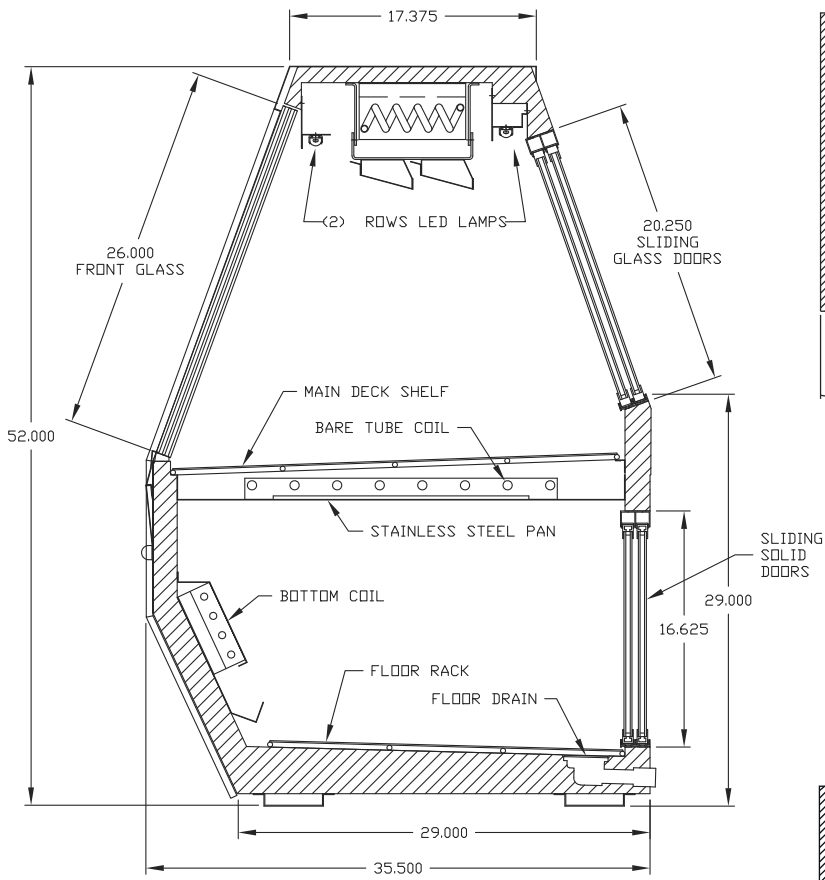
- Cases are designed to operate at 75 degrees Fahrenheit and 55% relative humidity
- Cases are equipped with drains; check your local building codes for connection requirements.
- Specification subject to change without notice

**(ALL WHITE OR ALL BLACK, NO EXTRA CHARGE—IF COLORS ARE MIXED AN ADDITIONAL CHARGE WILL APPLY)**

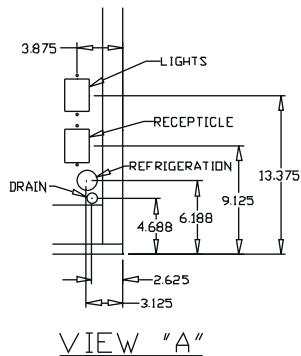
## 35 SERIES SERVICE CASE DOUBLE DUTY - RED MEAT

### DRAWINGS • SIDE VIEW • PLAN VIEW

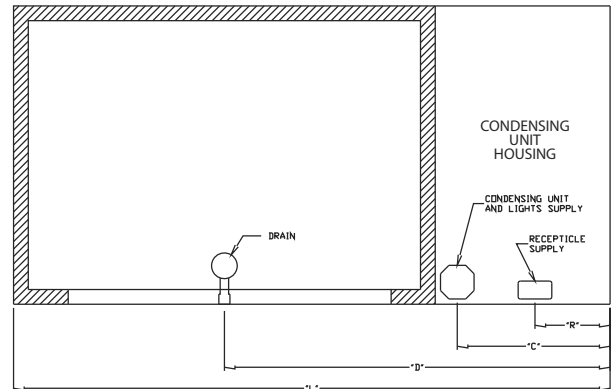
SIDE VIEW



CROSS SECTION



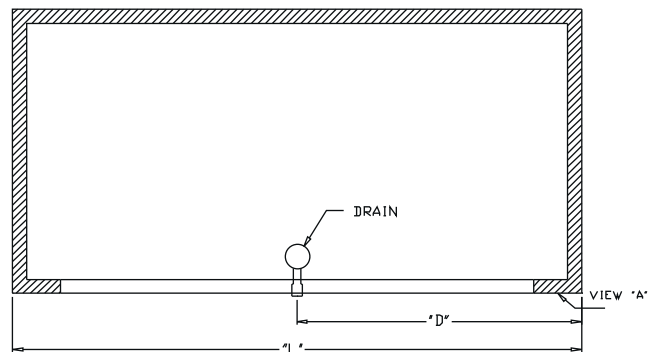
FRONT



SIZE	"L"	"R"	"C"	"D"
4	50	25	25	33
6	71	9	18.250	45.875
8	95	9	18.250	57.875
10	119	9	18.250	69.875
12	143	9	18.250	81.875

PLAN VIEW SELF CONTAINED

FRONT



SIZE	"L"	"D"
4	50	25
6	71	35.500
8	95	47.500
10	119	59.500
12	143	61.500

PLAN VIEW REMOTE