



“WE MAKE THE KITCHEN BETTER!”

ATOSA USA, INC.

Toll Free: 855-855-0399 Email: info@atosausa.com

www.atosa.com | www.atosausa.com

California, Colorado, Florida, Georgia, Illinois, New Jersey, Ohio, Texas, Washington

# 22” Ice Machines

## Standard Features

- Up to 350/450/600 lb production ice machines (per 24 hrs)
- Durable stainless steel exterior
- Digital Control
- Air cooled condenser
- Requires use of a drain
- NSF and ETL listed
- Removable air filter
- Screwless front panel
- Ice dimension: 3/8”x 7/8” x 7/8”
- Self-contained
- R290 refrigerant
- **Includes 3M water filter system standard**

## Maintenance and cleaning are not covered under warranty

All Atosa Ice machines should have the included 3M water filter system & cartridge installed. Recommended 3M cartridge replacement is recommended every 6 months. (may vary based on water quality)

Half-diced cube

Inlet hose

Drain hose



1. Don't forget to leave the unit some room to breathe!
2. Please clean the condenser frequently to give the unit more fresh air.



2 YEAR PARTS AND LABOR WARRANTY  
5 YEAR COMPRESSOR PART WARRANTY

## MODELS:

YRS0350A-161 / YRS0450A-161 / YRS0600A-261



YRS0350A-161



YRS0450A-161



YRS0600A-261





**"WE MAKE THE KITCHEN BETTER!"**

**ATOSA USA, INC.**

Toll Free: 855-855-0399 Email: [info@atosausa.com](mailto:info@atosausa.com)

[www.atosa.com](http://www.atosa.com) | [www.atosausa.com](http://www.atosausa.com)

California, Colorado, Florida, Georgia, Illinois,

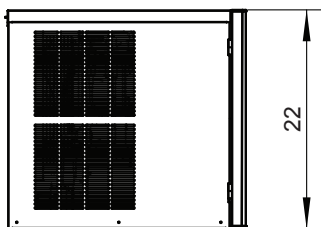
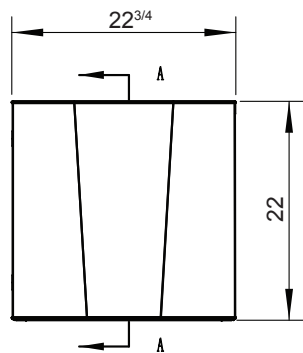
New Jersey, Ohio, Texas, Washington

## SPECIFICATIONS

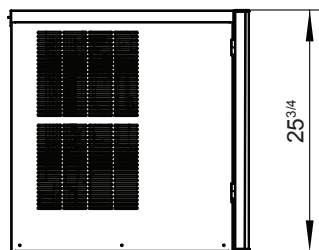
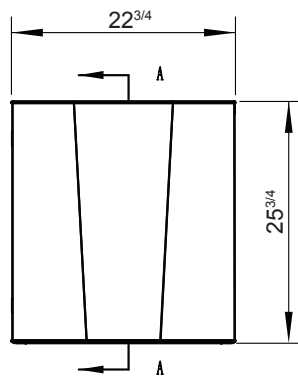
Model	Type	Refrigerant	Voltage (V/Hz/Ph)	Rated Current (A)	Power (W)	Plug	Ice-making Capacity (lb/hr)	Exterior Dimensions (inch)	Net Weight (lb)
YRS0350A-161	1/2 Cube ice	R290	115/60/1	10.6	1000	NEMA 5-15P	350/24	22 <sup>3/4</sup> × 24 <sup>1/4</sup> × 22	88
YRS0450A-161	1/2 Cube ice	R290	115/60/1	11.9	1150	NEMA 5-15P	450/24	22 <sup>3/4</sup> × 24 <sup>1/4</sup> × 25 <sup>3/4</sup>	106
YRS0600A-261	1/2 Cube ice	R290	208-230/60/1	6.8	1500	NEMA 6-20P	600/24	22 <sup>3/4</sup> × 24 <sup>1/4</sup> × 31 <sup>3/4</sup>	128

## PLAN VIEW

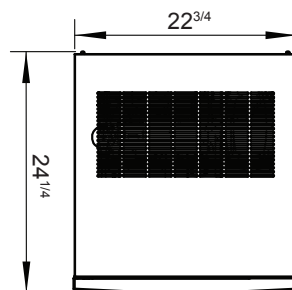
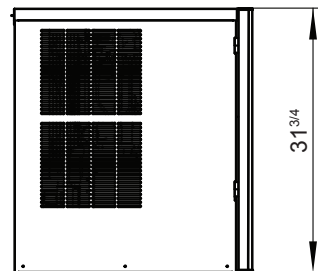
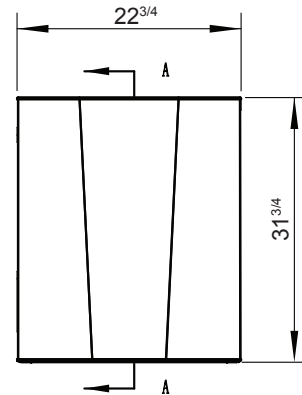
**YRS0350A-161**



**YRS0450A-161**



**YRS0600A-261**



Bottom View

