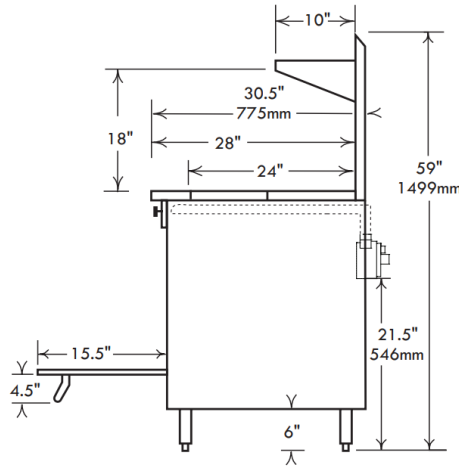
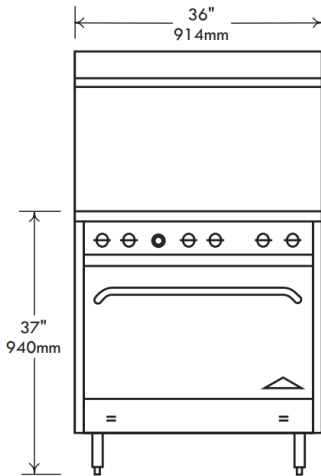




Model # F330-3RB

36" WIDE RANGE W/ CHAR-BROILER



*Drawing not exact



Model F330-3RB

*Picture shown with optional casters



*See website for details



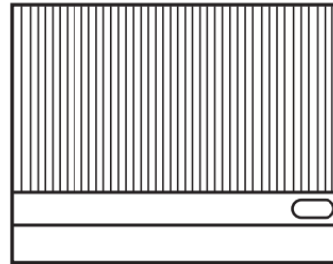
WARNING: This product can expose you to certain chemicals, which are known to the State of California to cause cancer or birth defects or other reproductive harm. For more information go to: www.P65Warnings.com

Standard Features, Benefits & Options

OVEN: 31.5" w x 22" d x 14" h for superior baking characteristics and results. Heavy insulation for fuel efficiency. Easy cleaning porcelain and aluminized linings with one nickel plated rack. 3 rack positions with 2 3/4" between rack positions. Long life, 30,000 BTU cast iron "H" pattern oven burner combined with special "V" shaped baffle directs heat for excellent air circulation.

CONTROLS: Includes 5000 thermostat, 100% safety shut off. Pressure regulators are set at the factory for the gas specified. Optimal pressures are 4" WC for natural gas and 10" WC for propane. Manifold size is 3/4" NPT. All controls are tested and confirmed in good working order. Calibration and adjustments are the responsibility of

COOK TOPS: Model F330-3RB features a 36" wide char-broiler. Rated at 90,000 BTU. Stainless steel bullnose-rail is safely flush with the cook tops and functional to straddle pots, skillets and plates and also serves as control protection.



*Actual cook top configuration shown



CONSTRUCTION: Easy cleaning, corrosion resistant stainless steel finish, welded with aluminized inner framing. Sturdy 6" heavy duty stainless pipe legs with adjustable feet. Double wall construction with heavy insulation for operation. Installation clearances for non-combustible surfaces are 0" on sides and 0" in the rear, combustible surface clearances are 2" and 2". Ranges with char-broilers come standard with low/stub backsplash & no over shelf for sanitation purposes.

CHAR-BROILER: This model features a 36" wide char-broiler, rated at 90,000 total BTU's. Flare up reducing cast-iron top grates and radiants for superior heat retention. Front grease trough and large capacity grease catch. SS splash guards tapering 4". Char-broilers are approved for use in non-combustible locations only.

Model #	Top	Base	Total BTU	Approx. Wgt. Kg. / Lbs.
F330-3RB	36" char-broiler	- w/ (1) 31.5" oven	120,000	580

This chart is intended to be a guide. Adjustments may be made to accommodate the cooking demands of various establishments.

NOTICE: In an ongoing effort of product development & improvement, Comstock-Castle reserves the right to change specifications and product design without notice. Such modifications do not entitle the buyer to corresponding changes or replacements for previously purchased equipment.



Comstock-Castle Stove Co. • 119 W. Washington St. • Quincy, IL. 62301
 Tel.: 217-223-5070 Fax: 217-223-0007 • www.castlestove.com

